



# RECYCLING

## 2025 BROCHURE

**Chestnuthill Township and Panther Waste Systems want to welcome you to the facility.**

**Recycling Center**  
**Hours of Operation:**

**Mon. & Wed.**  
7am to 2:45pm

**Winter Saturdays**  
Dec. 1 thru March 31  
7am to 3:45pm

**Summer Saturdays**  
April 1 thru Nov. 30  
7am to 4:45pm

**Compost Facility**  
**Hours of Operation:**

**Mon. & Wed.**  
7am to 2:45pm  
(Apr. 1 thru Nov. 30)

**Winter Saturdays**  
Dec. 1 thru March 31  
7am to 3:45pm  
(Weather Permitting)

**Summer Saturdays**  
April 1 thru Nov. 30  
7am to 4:45pm

**Both Facilities**  
**Closed on:**

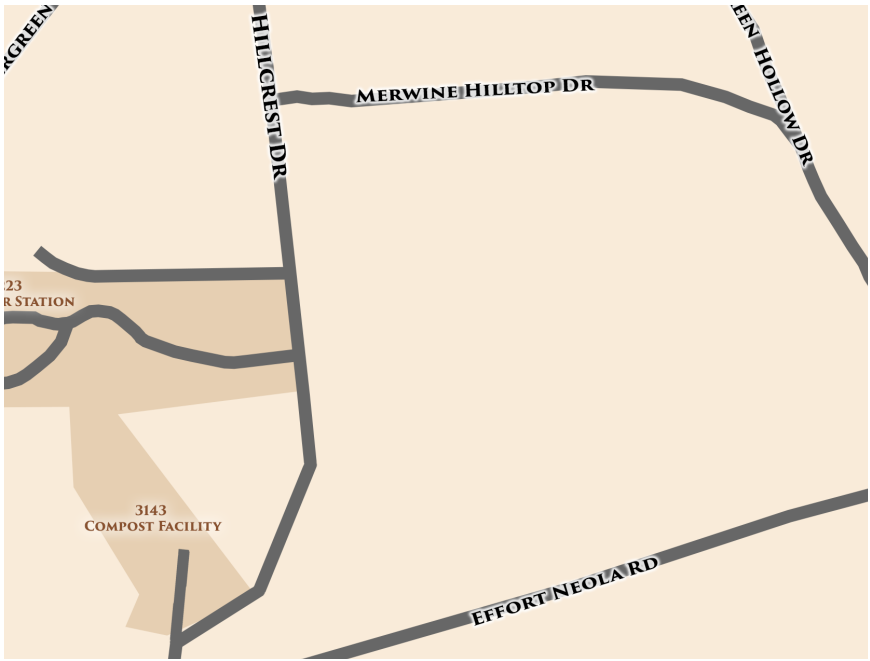
**Mon - 5/26/25**  
Memorial Day

**Mon - 9/1/25**  
Labor Day

**Wed - 12/24/25**  
Christmas Eve

**Wed - 12/31/25**  
New Year's Eve  
(Open 7a to 11a)





# DIRECTIONS TO THE TRANSFER STATION

3223 (Transfer Station) & 3143 (Compost Facility) Hillcrest Dr., Effort, PA 18330

For more information call (570) 992-4654.

The facilities are under video surveillance.

Anyone caught improperly disposing of material may be fined up to \$1,000.00 in accordance with Chestnuthill Township's Chapter 90 - Solid Waste and Recycling Ordinance.

---

# WHO WE ARE AND WHAT WE DO

Chestnuthill Township and Panther Waste Systems welcome you to the Chestnuthill Township Recycling Center. This facility recycles over 37 items. There is no charge for recycling at the Chestnuthill Township Recycling Center/Transfer Station and all residents are encouraged to save money by participating in the Pay As You Throw program. This simply means that at this facility you only pay for the items which you cannot recycle. The Township offers composting drop off at our facility for residents and businesses. Residents are encouraged to use the finished compost and mulch for their yard and garden projects. Please remember this facility is for Residents of Chestnuthill Township Only. Remember to separate and prepare your recyclables before entering the facility.



Rinse  
**RECYCLABLES**

Rinse recyclable food and beverage containers to keep insects away. This is very important for the marketability of these recyclables.



Separate  
**RECYCLABLES**

Recyclables must be separated before entering the facility. Set aside separate containers for your recyclables. You can use a plastic grocery bag or a cardboard box.



Go to the  
**CENTER**

After you drop off your recyclables, we prepare them for shipment to market.



We Handle the  
**REST**

Go to the Recycling Center and place your recyclables in the designated containers. When you are inside the building, turn your vehicle off.

# Schedule of Fees

\$2.00/bag up to 16 gal. - \$3.00/bag 17-44 gal.  
\$5.00/bag 45-59 gal - \$6.00/bag 60 gal. & larger

Appliances/Electronics		Furnishings	
Air Conditioner	\$0.00	Armoire	\$10.00-25.00
Blender/Mixer	\$0.00	Bed Frame	\$4.00
Dishwasher	\$0.00	Box Spring (Twin)	\$4.00
Dryer/Washer	\$0.00	Box Spring (Others)	\$7.00
Coffeemaker	\$0.00	Cabinets	\$5.00-15.00
Computers/Fax/Printer	\$0.00	Carpet	\$10.00-50.00
Dehumidifier	\$0.00	Chairs (Dining)	\$3.00
Fan/Heater	\$0.00	Chairs (Cushioned)	\$6.00
Freezer	\$0.00	Console	\$5.00-15.00
Hot Water Heater	\$0.00	Counters	\$10.00-40.00
Microwave Oven	\$0.00	Desk (Wood)	\$7.00
Radio/Stereo	\$0.00	Doors	\$5.00 -15.00
Refrigerator	\$0.00	Dresser	\$10.00-15.00
Range/Stove	\$0.00	End Table/Nightstand	\$4.00
Television	\$0.00	Hutch	\$10.00-40.00
Toaster	\$0.00	Lamp	\$1.00
Vacuum	\$0.00	Mattress (Twin)	\$7.00
VCR	\$0.00	Mattress (Double)	\$9.00
Wood/Coal Stoves	\$0.00	Matress (King/Queen)	\$15.00
Other:		Pillow Top Mattress	add'l \$5.00-10.00
Antifreeze	\$0.00	Playpen/Crib	\$3.00
Brush/ Christmas Trees	\$0.00	Pool Liner	\$15.00-25.00
Coal Ash	\$0.00	Pool Table (No Slate)	\$25.00-40.00
Garden Residue	\$0.00	Recliner	\$8.00
Grass Clippings/Leaves	\$0.00	Shingles	\$15.00/Square
Oil	\$0.00	Sink (Single)	\$4.00
Pallets (Clean)	\$0.00	Sink (Double)	\$8.00
Bicycle	\$0.00	Sofa/LoveSeat	\$10.00-20.00
Cabinets (Metal)	\$0.00	Sofa Bed	\$20.00-30.00
Car Door	\$0.00	Swimming Pool	\$5.00-25.00
Car Fender	\$0.00	Table	\$4.00
Desk (Metal)	\$0.00	Toilet	\$8.00
Grill	\$0.00	Tub (Fiber Glass)	\$18.00
Swing Set	\$0.00	All other furnishings will be charged by weight	
Table (Metal)	\$0.00		

---

# WHAT DO I DO WITH MY RECYCLABLES

<i>Corrugated Cardboard</i>	Place <b>FLATTENED</b> box in designated container.
<i>Newspapers, Magazines, Catalogs, Junkmail, Office Paper, Books.</i>	Place in designated container. Remove hardcovers and metal from spiral notebooks.
<i>Plastics- Bottles, Jugs, &amp; Food Containers</i>	Place <b>RINSED</b> plastic in designated container.
<i>Rigid Plastics</i>	Place <b>CLEAN</b> plastic in designated container.
<i>Aluminum Cans &amp; Tin (Bi-Metal)</i>	Place <b>RINSED</b> cans in designated container. All other metal can go in to the large bulky metal container.
<i>Glass (All Colors)</i>	Place <b>RINSED</b> glass in designated container. <b>NO</b> windows, mirrors, dishes, or lightbulbs. Do <b>NOT</b> break glass bottles or jars.
<i>Styrofoam</i>	<b>NO</b> Polyethylene styrofoam (layered styrofoam that does not break easily when bent) or <b>UNWASHED</b> meat trays. Place <b>EPS</b> white styrofoam (styrofoam that easily breaks into beads when bent), packing peanuts, & egg cartons in designated containers.



## Our Markets Dictate:

In order for items to ultimately be recycled, they have to be acceptable to the markets that purchase the materials. Our markets dictate that certain items must be recycled certain ways. This is why it is critical to follow the specific instructions as to what can and cannot be included and how the recyclables need to be prepared. If we cannot market the materials you bring us, sadly, they could end up in the landfill. We thank you for your preparation when coming to the facility.

# IMPORTANT INFORMATION

## Recycling Above & Beyond

### ELECTRONICS/ APPLIANCE RECYCLING

Electronics and appliance recycling is available for residents at the Chestnuthill Township Transfer Station.

This program is limited to two items per month.

### STYROFOAM

Not all styrofoam is accepted due to market requirements. Check previous list or ask for handout to know what is accepted.

### USED OIL/ ANTIFREEZE

We also accept used oil and antifreeze in their original containers at the recycling center. Please ask an attendant for assistance.

### FLOURESCENT LIGHTBULBS

Ask an attendant about recycling your flourescent lightbulbs.

### SENSITIVE DOCUMENTS

Ask an attendant if you need sensitive document shredding.



### PROGRAMS/ BUSINESSES THAT ACCEPT TIRES

#### Monroe County MWMA

183 Commercial Blvd Blakeslee  
570-643-6100

#### KOST Tire,

1981 Rt.209 Brodheadsville  
570-992-2220

#### Mavis Tire,

1949 Rt.209 Brodheadsville  
570-231-3608

#### Mavis Tire,

1480 Rt.209 Brodheadsville  
570-754-8683

---

# WHAT DO I DO WITH PAINT CANS

## **Cans of Latex Paint Disposal:**

1. Pour paint into absorbant material (shredded newspaper or cat litter).
2. Allow it to completely dry.
3. Dispose of dried paint in trash.
4. Recycle the empty dry container

## **We DO NOT Accept Oil-based Paint:**

Oil-based paint, stains, and varnishes are hazardous and should not be disposed of with household waste.

*Call the Pennsylvania Department of Environmental Protection at (570) 826-2511 regarding hazardous waste collection programs.*



# YARD WASTE

## Compost and Mulch

### YARD WASTE

Residents of Chestnuthill Township are encouraged to bring their tree trimmings and leaves to the compost facility for composting.

Compost/mulch, when available, may be self-loaded by township residents at no charge. If you want the Township to load, see the fee schedule below.

If you are a contractor or commercial business, please ask for a Compost Facility user fees.

### COMPOST/MULCH

Fees for loading mulch are: \$5.00 per yard.

Fees for loading compost are: \$8.00 per yard.

Loading is available on Saturday's Only.





# WHAT IF I WANT TO RECYCLE CURBSIDE?



## Questions to ask your hauler:

What type of recyclables do you collect?

How should I prepare them for collection?

What type of container may I place my recyclables in?

Where should I place my recycling container on collection days?

What is the recycling collection schedule?



# PRIDE IN CHESTNUTHILL

We need your help!

We invite you, your family, and friends to join us in helping to keep our community clean and green. For years, our award winning committee has been focused on the beautification of our community. Volunteers give their time to clean our roads on designated field days. Unfortunately, litterbugs are the primary reason Pride in Chestnuthill exists.



## PIC FIELD DAYS

Check our website for dates in both the spring and fall.



## SPREAD THE WORD

Tell your neighbors how easy and inexpensive it is to recycle.



## YOUR THOUGHTS

We welcome your suggestions on how to improve our efforts.



## CONTACT US

For more information, call 570-992-7247 or visit [chestnuthilltwp-pa.gov](http://chestnuthilltwp-pa.gov).



## VOLUNTEER GROUP

We are a group dedicated to making the community a beautiful place to live.



## REMEMBER

...

It's your town, please don't litter!



This message was brought to you by an organization known as "Pride in Chestnuthill". This organization was formed by residents who volunteer their time to make Chestnuthill Township a brighter and cleaner community. *"Many hands make light work."*

# REGISTERED HAULERS

## Contacts and Information

### WASTE MANAGEMENT INC.

910 W. Pennsylvania Ave, Pen Argyl, PA 18072

888-906-6147

[www.wm.com](http://www.wm.com)

Visit Waste Management's website to obtain a quote.

### CASELLA WASTE SYSTEMS

658 Silver Spring Blvd., Kunkletown, PA 18058

866-599-3451

[www.casella.com](http://www.casella.com)

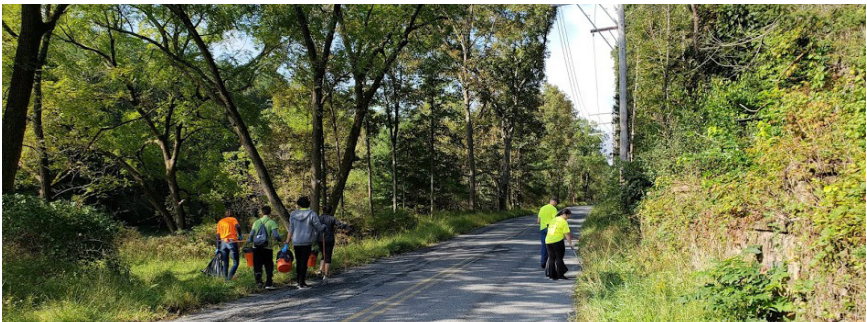
Visit Casella's website to obtain a quote.

# ATTENTION LITTER BUGS

## Did You Know...

Did you know that when you litter it will be there for a long time?

Cigarette Butts	Between 1-5 years
Plastic Coated Paper	Up to 5 years
Plastic Bags	Between 10-20 years
Nylon Fabric	Between 30-40 years
Plastic Six Pack Holder	Up to 100 years
Aluminum Can	Up to 500 years
Glass Bottle	Up to 1,000 years
Plastic Bottle	Indefinitely



---

# THANK YOU

## FOR KEEPING CHESTNUTHILL CLEAN & GREEN

For more information visit [www.chestnuthilltwp-pa.gov](http://www.chestnuthilltwp-pa.gov), or call us at 570-992-7247.

Report a litter bug by calling the MCMWMA anonymous tip line at 570-643-6100.

Assisting you at the Recycling Facility are workers from **Allied Services**.

